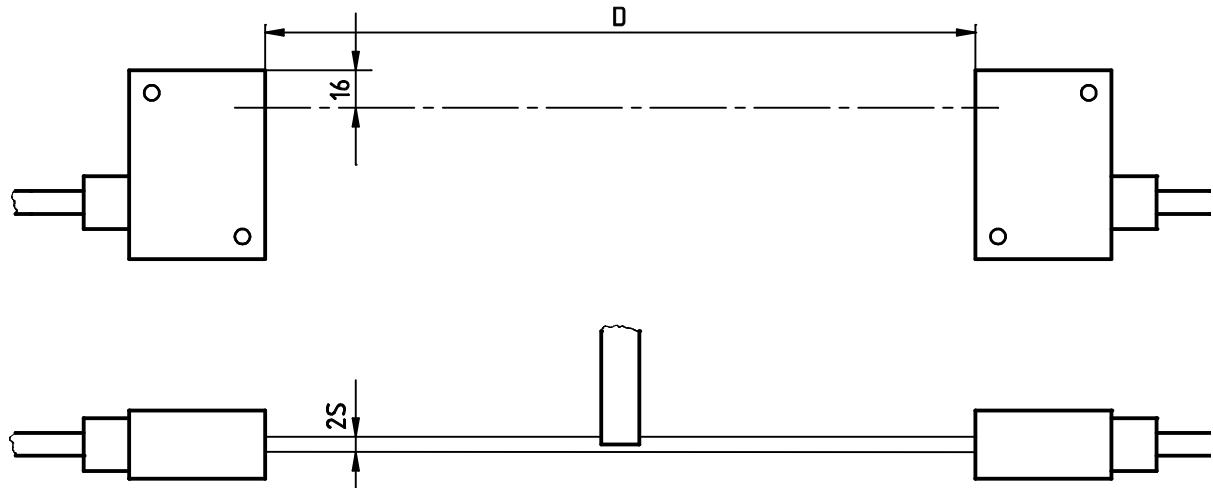


## Light barriers G15



Light barriers in the G15EF range are principally used in length measurement systems.

The response time when light beams are interrupted or established is 100  $\mu$ s.  
The *accuracy* +/- *S* and *repeatability* *W* are listed below.

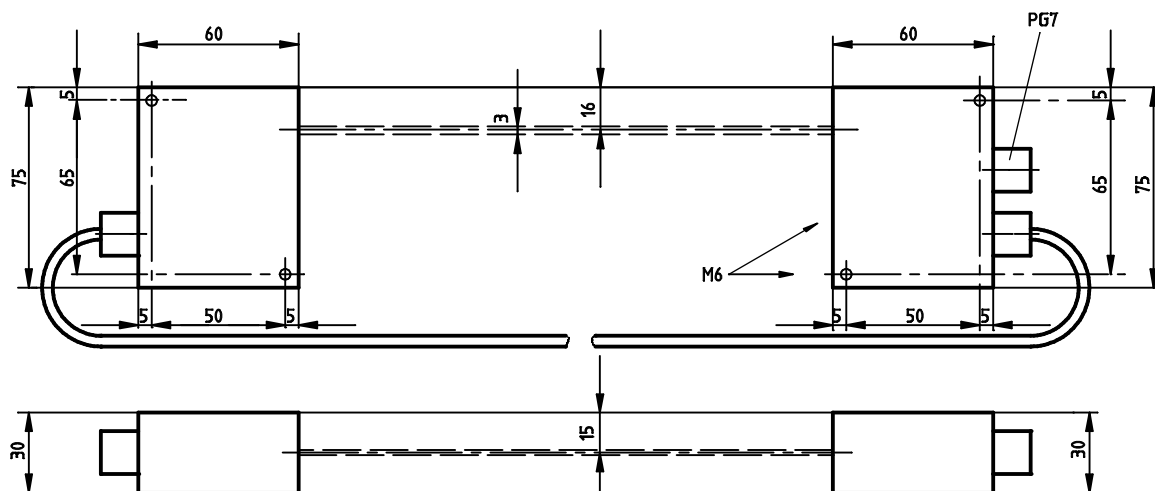
### Available versions

	G15E1xF10	G15E2xF20	G15E3xF30	G15E4xF40
<i>Max. separation D</i>	200 mm	350 mm	700 mm	1000 mm
<i>Accuracy S</i>	0.5 mm	0.8 mm	1.0 mm	1.0 mm
<i>Repeatability W</i>	0.1 mm	0.2 mm	0.3 mm	0.3 mm
<i>Size</i>	G15E, G15F: 60*75*30 mm			
<i>Permitted ambient temperature</i>	0°C to 50°C			
<i>Output</i>	Transistor, max. capacity: 30VDC/100mA			
<i>Protection</i>	IP65			

	G15Ex1Fx0	G15Ex2Fx0
<i>Rating</i>	24VDC/40mA or 24VAC/50mA	12VDC/30mA up to 15VDC/40mA

*Receiver G15F*

*Transmitter G15E*



**Connections on Transmitter G15E**

Screw connections can be accessed when the housing is removed.

**Screen**

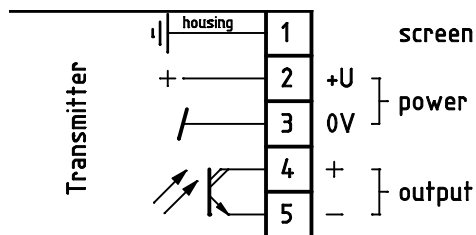
Each end of screen has to be connected with device housing!

**Supply voltage U**

G15Ex1Fx0:  
24VDC/40mA or 24VAC/50mA  
G15Ex2Fx0:  
12VDC/30mA up to 15VDC/40mA

**Signal Output**

Max. capacity: 30 V = / 100 mA  
Transistor conducting when sensing area is free.



The product specifications are based on theoretical and experimental data, and we also have a policy of continuous improvement in performance. Thus although we attempt to provide equipment which in all respects meets specifications, this cannot be ensured in all cases without written confirmation from OPTRONIC AG.